

## Accessibility Guide for Chesterfield Museum

[museum@chesterfield.gov.uk](mailto:museum@chesterfield.gov.uk)

Tel: 01246 345727

[www.chesterfieldmuseum.co.uk](http://www.chesterfieldmuseum.co.uk)

Contact for accessibility enquiries: Kerry Sheldon



### Welcome

The Museum tells the story of Chesterfield, from its beginning as a Roman fort on Ryknield Street to the building of the 'Crooked Spire' Church and its growth as a market town.

The Museum also explores the town's industrial heritage, and Chesterfield's most famous Victorian resident George Stephenson, the 'Father of the Railways', is also featured.

Children can follow a trail around the Museum and make discoveries of their own. There are hands on 'Discovery Spots' around the Museum from coin rubbing to using a mangle. Our temporary exhibitions also have hands on things to do and colouring sheets are always on offer.

Education and memory boxes can be hired from the Museum – give us a call.

The Museum is open Monday and Thursday to Saturday, 10am – 4pm all year round

## At a Glance

### Level Access

- The main entrance has level access with a ramp. The ramp is permanent.
- There is level access from the main entrance to:
  - ✓ Permanent exhibition
  - ✓ Public Desk
  - ✓ Museum Toilets
  - ✓ Museum Gift Shop
  - ✓ Temporary Exhibition
  - ✓ Little Gallery
  - ✓ First Floor Gallery staircase
- There is access via a stair lift to:
  - ✓ First Floor Gallery

### Hearing

- All staff have disability awareness training.

### Visual

- Glass doors have contrast markings.
- The walls and doors have high colour contrast.
- Some parts of the venue have low lighting due to the sensitivity of items on display.
- Information is available in large print on request.

### General

- There is a public toilet for disabled visitors.
- All staff have disability awareness training.

## Getting Here

St Mary's Gate  
Chesterfield  
Derbyshire  
S41 7TD

### Travel by public transport

- You can get to Chesterfield Museum by bus and train.
- Chesterfield Museum is in Chesterfield town centre. The town centre is a hub for public transport links and has several key bus stop locations for both local and national travel. The nearest bus stop is 0.2 miles / 0.3 km from Chesterfield Museum.
- The nearest train station is Chesterfield. The railway station is approximately 400 metres away (a 5 minute walk). The route is along pavements and, where

roads have to be crossed, there are dropped kerbs. The route is steep and not suitable for a manual wheelchair user travelling independently.

- Chesterfield Coach Station, which is the National Express stop, is 600 metres away (a 10 minute walk). The route is along pavements and where roads have to be crossed, there are dropped kerbs and pedestrian crossings.
- You can get a taxi with City Taxis (Tel: 01246 221111) or Carry Care (Tel: 01246 439118). Both have a wheelchair accessible vehicle.

## Parking

- There is a drop-off point at the main entrance. The drop off point has a dropped kerb.
- Chesterfield Museum is signposted from all car parks as well as the railway station and coach station. The nearest car park is the pay and display car park on St Mary's Gate, with 66 spaces, two of which are blue badge holder bays. It is 50 metres from the Museum. The car park is covered by CCTV and is part of the Park Mark security scheme. Further details about parking in Chesterfield can be found at [www.chesterfield.gov.uk/parking](http://www.chesterfield.gov.uk/parking).
- The route from St Mary's Gate car park is along a tarmac and flagstone pavement. There is street lighting in the car park and outside the Museum.



St Mary's Gate car park

## Arrival

### Path to main entrance

- From the street to the main entrance, there is level access.
- There is a permanent ramp.
- The path is 1260mm wide, or more.
- The path is sloped.

## Main entrance

- The main entrance has level access.
- There is a permanent ramp.
- The main door is side hung and manual.
- The door is 1240mm wide.
- The door to the Museum is open whenever the building is open to the public. There is an interior push door that is 810mm wide, but an extra door panel can be opened to give a width of 1240mm.



Ramp to Museum entrance



Museum door



Museum interior door



## Getting around inside

### Visual impairment – general information

- We have contrast markings on all glass doors and high colour contrast between walls and doorframes.
- Some parts of the venue have low lighting

### Information desk

- The route is 810mm wide, or more.
- The door is 810mm wide, or more.
- The desk is 940mm high but staff are positioned on the public side of the desk to greet visitors and explain the layout of the Museum and our main attraction, the builders' windlass used in the construction of the 'Crooked Spire' Church.

A magnifying glass, paper and pens are available on request. Staff are easy to identify as they wear uniforms and name badges. Staff are happy to provide assistance and to read out any literature or display panels if required.

There is no background music or tannoy. The floor is carpeted and level throughout.



Information desk

## Things to See and Do

### Permanent Exhibition

- From the main entrance to this area there is level access. Some display information is at a low level for wheelchair users.
- The area is lit by spotlights and uplighters and display cases are illuminated. The flooring is carpeted and all on one level with plenty of space for wheelchairs and pushchairs to manoeuvre, although space for mobility scooters is more restricted.
- Seating is placed at convenient locations throughout the display area.



Permanent exhibition – the Romans



Permanent exhibition – the market



Permanent exhibition – part of the industry display



Permanent exhibition George Stephenson

### **Museum Toilets**

- There is a public toilet for disabled visitors.
- From the main entrance to the public toilet, there is level access. There is a permanent ramp.
- The route is 860mm wide, or more.
- The toilet door is 690mm wide.
- The direction of transfer is to the left.
- There is 1130mm at the side of the toilet. There is 1150mm in front of the toilet. The toilet seat is 440mm high. The toilet has handrails.
- Baby changing facilities are available in the disabled toilet.

### **Museum Gift Shop**

- From the main entrance to the shop there is level access. The route is 820mm wide, or more.
- The route through the shop is 800mm wide or more.
- The shop sells a variety of souvenirs and locally sourced gifts, along with books. Our display shelves range from low level up to a height of 1690mm. Assistance is available for anyone wanting items from the higher shelves. The shop is well lit by a number of spotlights.



### **Temporary Exhibition**

- From the main entrance to this area, there is level access. The route is 1250mm wide, or more.
- The area is lit by spotlights and uplighters and display cases are illuminated. The flooring is carpeted and all on one level with plenty of space for wheelchairs and pushchairs to manoeuvre, although space for mobility scooters is more restricted. Seating is placed at convenient locations throughout the display area.
- Footstools are available for children to use on higher parts of the hands on activities. Discovery spot activities are at floor level.





Temporary exhibition – overview



Temporary exhibition – whale model

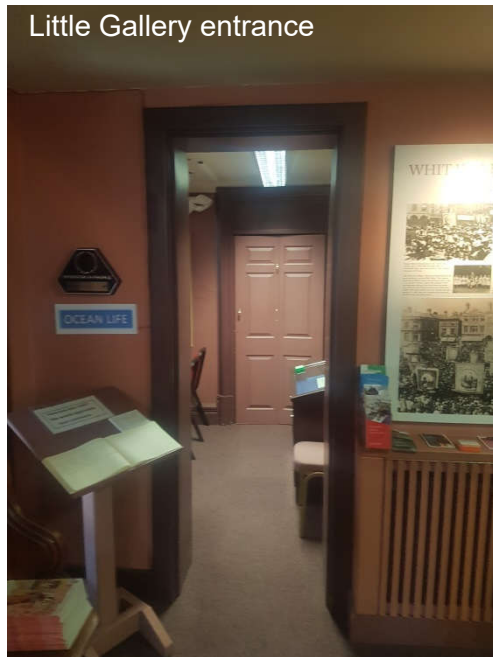


Temporary exhibition – shop counter interactive



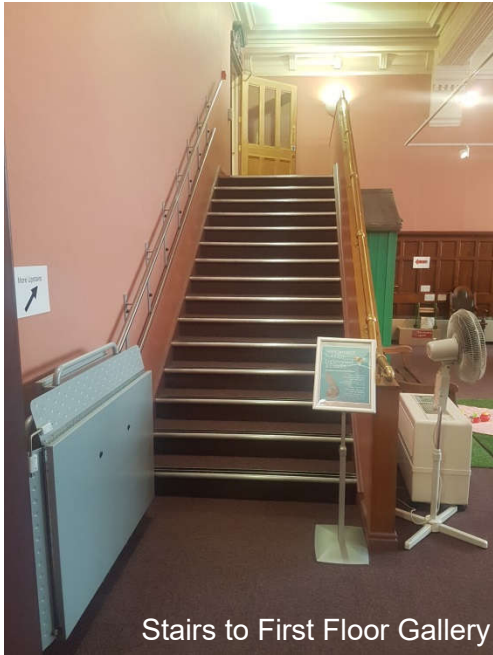
## Little Gallery

- From the main entrance to this area, there is level access. The route is 710mm wide or more.
- The area is lit by fluorescent tubes. The flooring is carpeted and all on one level.
- Seating is provided but the room can only take a maximum of 10 people. Seating can be removed or rearranged to accommodate wheelchairs and pushchairs.
- The room is used for a changing programme of interesting exhibitions in a cosy setting.
- A video is usually available and runs on a loop. It lasts about 15 minutes and the volume can be controlled accordingly on request.

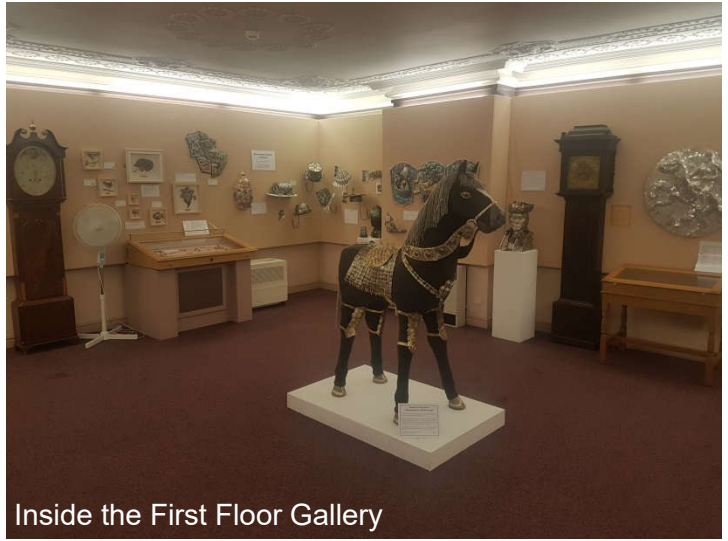


## First Floor Gallery

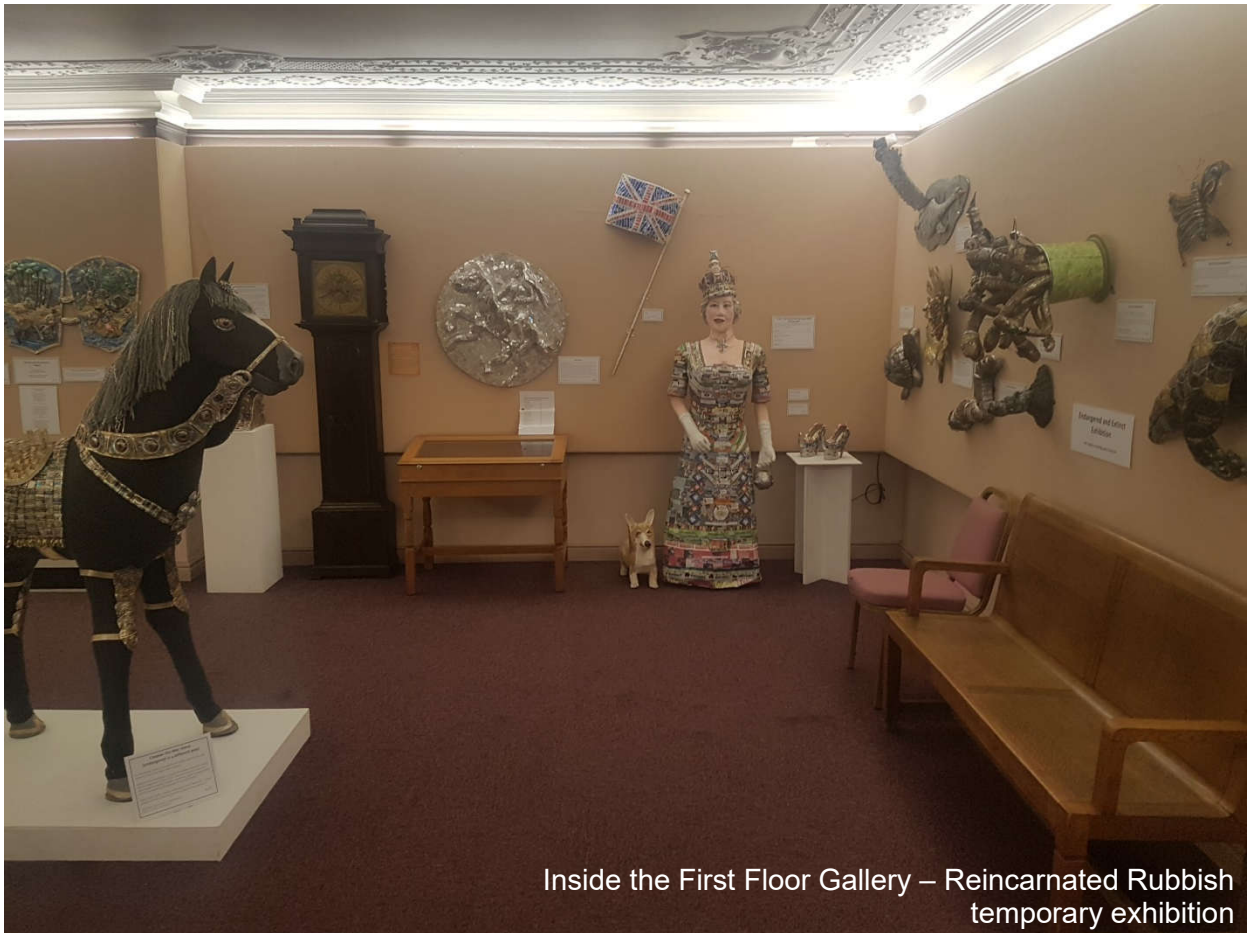
- There are stairs up to the First Floor Gallery but a stair lift is provided. The stair lift can take wheelchairs but not mobility scooters. A wheelchair is available for use in the Museum free of charge.
- From the main entrance to the foot of the staircase, there is level access.
- The door to the First Floor Gallery is 1090mm wide. It is side hung and manual and assistance is available on request.
- There are 15 stairs to the First Floor Gallery. The stairs have a handrail, and a stair lift operated by staff on request is provided.
- The Gallery is lit by concealed fluorescent tubes. As some items displayed are sensitive to light, the lighting is controlled by a dimmer box. Lighting can be increased or decreased on request. The flooring is carpeted and all on one level and seating is provided.



Stairs to First Floor Gallery



Inside the First Floor Gallery



Inside the First Floor Gallery – Reincarnated Rubbish temporary exhibition

## **Customer care support**

### **Accessibility equipment**

- We provide a wheelchair. There is no charge for the wheelchair.
- You can hire mobility equipment from Shopmobility by calling 01246 559331.

### **Emergency evacuation procedures**

- We have emergency evacuation procedures for disabled visitors.
- An evacuslide is available in an emergency.

### **Customer care support**

- All staff have disability awareness training.
- We have information available in large print on request.
- Assistance dogs are welcome.
- All our exhibitions have hands on activities for children. We also provide colouring sheets, crafts and quizzes for children.
- We provide education loan boxes with handling items for schools.
- We provide memory boxes with handling objects to help people living with dementia to remember their past.



Guide last updated: 31 January 2020